

# MIRAE ASSET INDIA SECTOR LEADER EQUITY FUND

SHARE CLASS A IN USD

## INVESTMENT OBJECTIVE

The primary objective of the sub-fund is to achieve long term growth in the share price through capital appreciation of the underlying equity portfolio.

The Principal Investment Manager will seek to achieve the objective of the sub-fund by investing mainly in equities and equity related securities of sector leading companies domiciled in or exercising a large portion of their economic activity in India.

## MORNINGSTAR RATING

★★★★

## FUND CHARACTERISTICS

Total Fund Size (M)	USD 178.30
Net Asset Value	USD 16.50

## KEY FACTS

Benchmark	MSCI India Index
Fund Structure	Luxembourg SICAV - UCITS compliant
Morningstar Category TM†	India Equity
ISIN Code	LU0336297295
Bloomberg Ticker	MAISLEA LX
Currency of the Share Class	USD
Other Dealing Currencies	EUR, GBP
Fund Launch Date	2011-03-02
Share Class Launch Date	2011-03-02
Valuation	Daily

## SUBSCRIPTION DETAILS

Subscription Fee	Up to 5.25%
Redemption Fee	None
Switching Fee	Up to 1.00%
Management Fee	1.5% p.a.
Min Initial Investment	USD 2,500
Min Subsequent Investment	None

## FUND MANAGER

Lead Portfolio Manager: Rahul Chadha  
Co-Portfolio Manager<sup>^</sup>: Vineet Thodge

## IMPORTANT

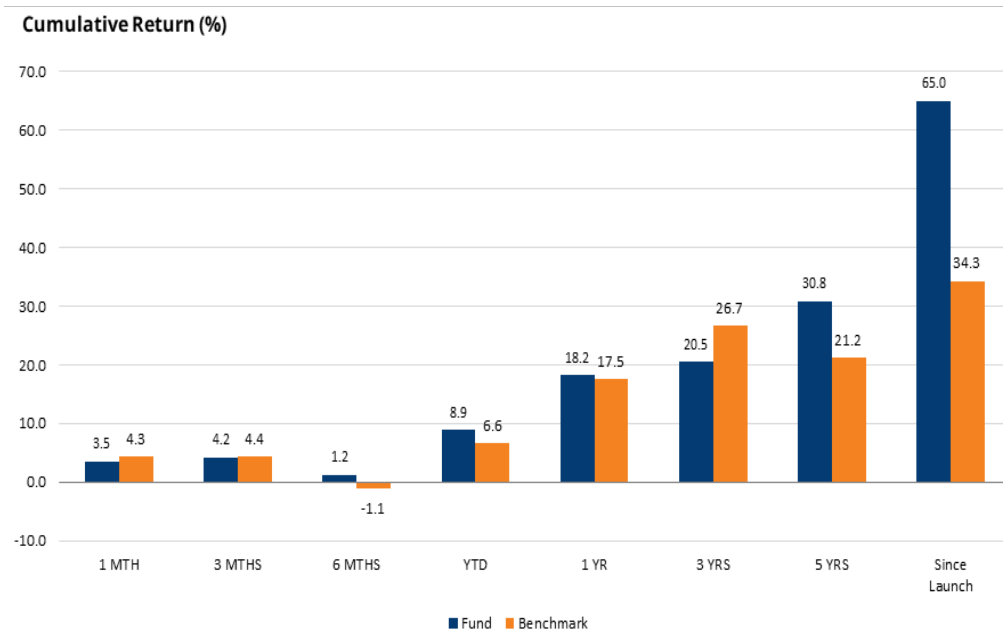
- Mirae Asset India Sector Leader Equity Fund (the "Fund") mainly invests in equities and equity-related securities of companies domiciled in or exercising a large portion of their economic activity in India.
- The Fund invests in emerging markets should be regarded as having higher political, regulatory, volatility, liquidity, economic and foreign currency risks than a fund which invests in developed markets.
- The Fund invests in India should be regarded as having higher concentration risks than a fund following a more diversified policy.
- Before you decide to invest, you should make sure the intermediary has explained to you that the Fund is suitable to you.
- Investors should not only base on this marketing material alone to make investment decisions.

## PERFORMANCE

Cumulative Return (%)	1 MTH	3 MTHS	6 MTHS	YTD	1 YR	3 YRS	5 YRS	Since Launch
Fund	3.5	4.2	1.2	8.9	18.2	20.5	30.8	65.0
Benchmark	4.3	4.4	-1.1	6.6	17.5	26.7	21.2	34.3

Calendar Year Return (%)	2013	2014	2015	2016	2017	2018
Fund	-2.5	34.1	-0.2	-0.4	41.6	-14.1
Benchmark	-3.8	23.9	-6.1	-1.4	38.8	-7.3

## PERFORMANCE CHART



<sup>^</sup>The Co-portfolio manager appointment was effective from 1 March 2019.

# MIRAE ASSET INDIA SECTOR LEADER EQUITY FUND

SHARE CLASS A IN USD

**SECTOR ALLOCATION\*\***

	Fund (%)	Benchmark (%)
Financials	38.8	25.8
Energy	13.6	16.3
Information Technology	7.3	16.0
Real Estate	6.7	0.0
Industrials	6.6	4.1
Health Care	5.7	4.1
Consumer Discretionary	5.7	9.2
Utilities	4.5	2.6
Consumer Staples	4.3	11.1
Materials	4.1	7.8
Communication Services	2.6	3.0
Cash	0.3	0.0

**MARKET CAPITALIZATION ALLOCATION\*\***

	Fund (%)	Benchmark (%)
LARGE CAP	72.7	80.9
MID CAP	13.4	18.7
SMALL CAP	13.6	0.4
Cash	0.3	0.0

**OTHER AVAILABLE SHARE CLASSES**

Share Class	ISIN Code	Bloomberg Ticker
Class A EUR	LU0336297378	MAISLRA LX

**TOP TEN HOLDINGS**

Name	Country	Sector	Fund (%)	Benchmark (%)
ICICI Bank Limited	India	Financials	7.7	3.1
Reliance Industries Limited	India	Energy	7.4	11.8
Housing Development Finance Corporation Limited	India	Financials	6.7	9.8
Axis Bank Limited	India	Financials	5.4	4.3
Infosys Limited	India	Information Technology	5.0	6.7
SBI Life Insurance Co. Ltd.	India	Financials	4.8	0.0
HDFC Bank Limited	India	Financials	4.1	0.0
ICICI Prudential Life Insurance Co. Ltd.	India	Financials	3.6	0.0
Bharti Airtel Limited	India	Communication Services	2.6	2.2
Larsen & Toubro Ltd.	India	Industrials	2.5	2.0
Total			49.7	39.9

For more information, please contact us at **+852 2295 1500** or by e-mail to [info@miraeasset.com.hk](mailto:info@miraeasset.com.hk)

**Mirae Asset Global Investments (Hong Kong) Limited** | Address: Level 15, Three Pacific Place, 1 Queen's Road East, Hong Kong | Website: <https://www.am.miraeasset.com/>

Source: FactSet, Bloomberg and Mirae Asset Global Investments (HK) Limited data as of 31 October 2019. All performance numbers are net of fees, NAV to NAV, in USD with dividends reinvested. Fund: The fund inception date was 2 March 2011 whilst Class A (USD) was launched on 2 March 2011. Benchmark: MSCI India Index. The benchmark is a gross return index that includes reinvestment of dividends/income. †Morningstar, Inc. All Rights Reserved. Morningstar rating as of 31 October 2019. \*\*Due to rounding, the sum may not equal 100%. Market capitalisation breakdown: Large Cap > USD 10B; Mid Cap USD 2-10B; Small Cap < USD 2B.

**DISCLAIMER**

Certain information contained in this document is compiled from third party sources. Whilst Mirae Asset Global Investments (Hong Kong) Limited ("Mirae Asset HK") has, to the best of its endeavor, ensured that such information is accurate, complete and up-to-date, and has taken care in accurately reproducing the information, it shall have no responsibility or liability whatsoever for the accuracy of such information or any use or reliance thereof. Mirae Asset HK accepts no liability for any loss or damage of any kind resulting out of the unauthorised use of this document. The information contained in this document is for information purposes only and does not constitute any recommendation, offer or solicitation to buy, sell or subscribe to any securities or financial instruments in any jurisdiction.

Mirae Asset India Sector Leader Equity Fund is a sub fund of Mirae Asset Global Discovery Fund (Company), a Luxembourg SICAV. Investment involves risk. It cannot be guaranteed that the performance of the Fund will generate a return and there may be circumstances where no return is generated or the amount invested is lost. Past performance is not indicative of future performance. Before making any investment decision to invest in the Fund, investors should read the Prospectus and the Information for Hong Kong Investors for details and the risk factors. Investors should ensure they fully understand the risks associated with the Fund and should also consider their own investment objective and risk tolerance level. Investors are advised to seek independent professional advice before making any investments. References to particular sectors, securities or companies are for general information and illustrative purposes only and are not recommendations to buy or sell a security, or an indication of Mirae Asset HK's holdings at any one time.

This document is issued by Mirae Asset HK and has not been reviewed by the Securities and Futures Commission.